

# Help in Power Point Presentations



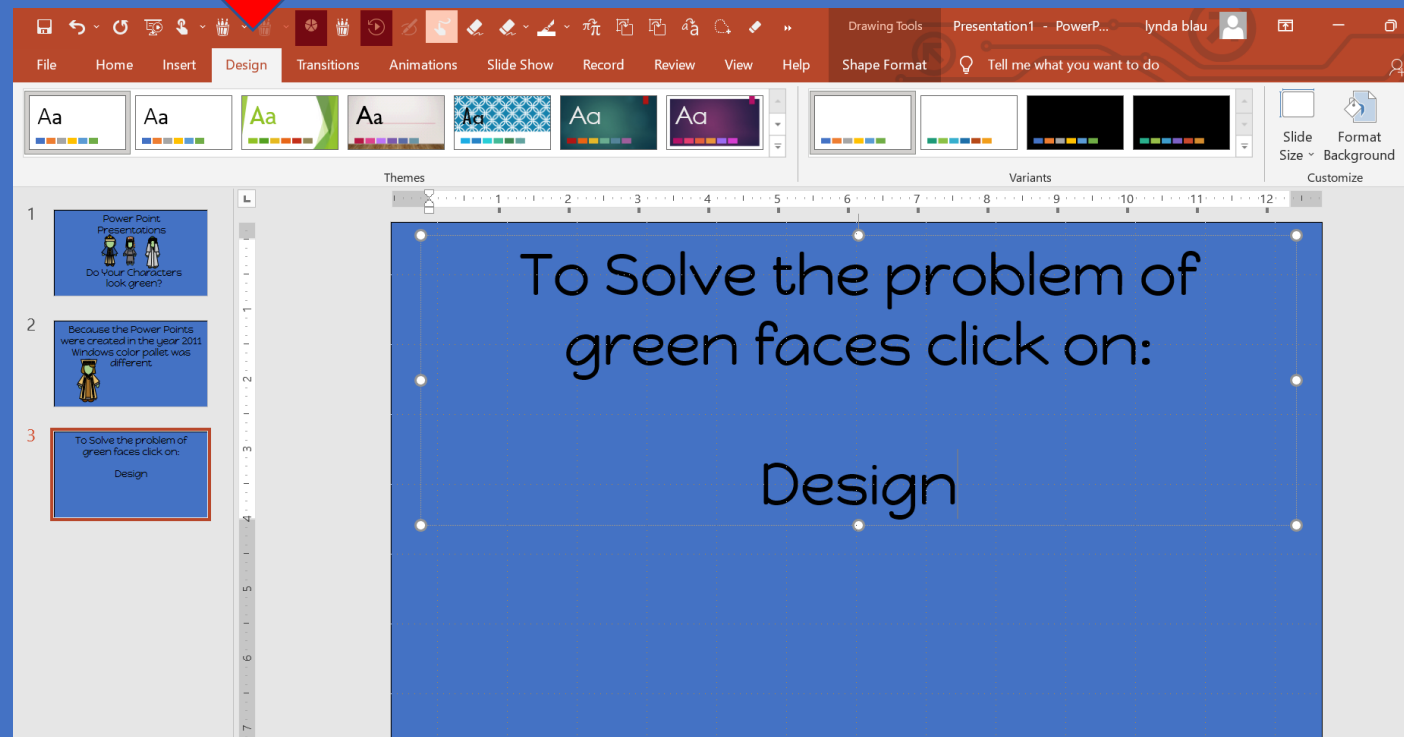
Do Your Characters  
look green?

Because the Power Points  
were created on or in the  
year 2011.



Microsoft office  
color pallet was  
different.

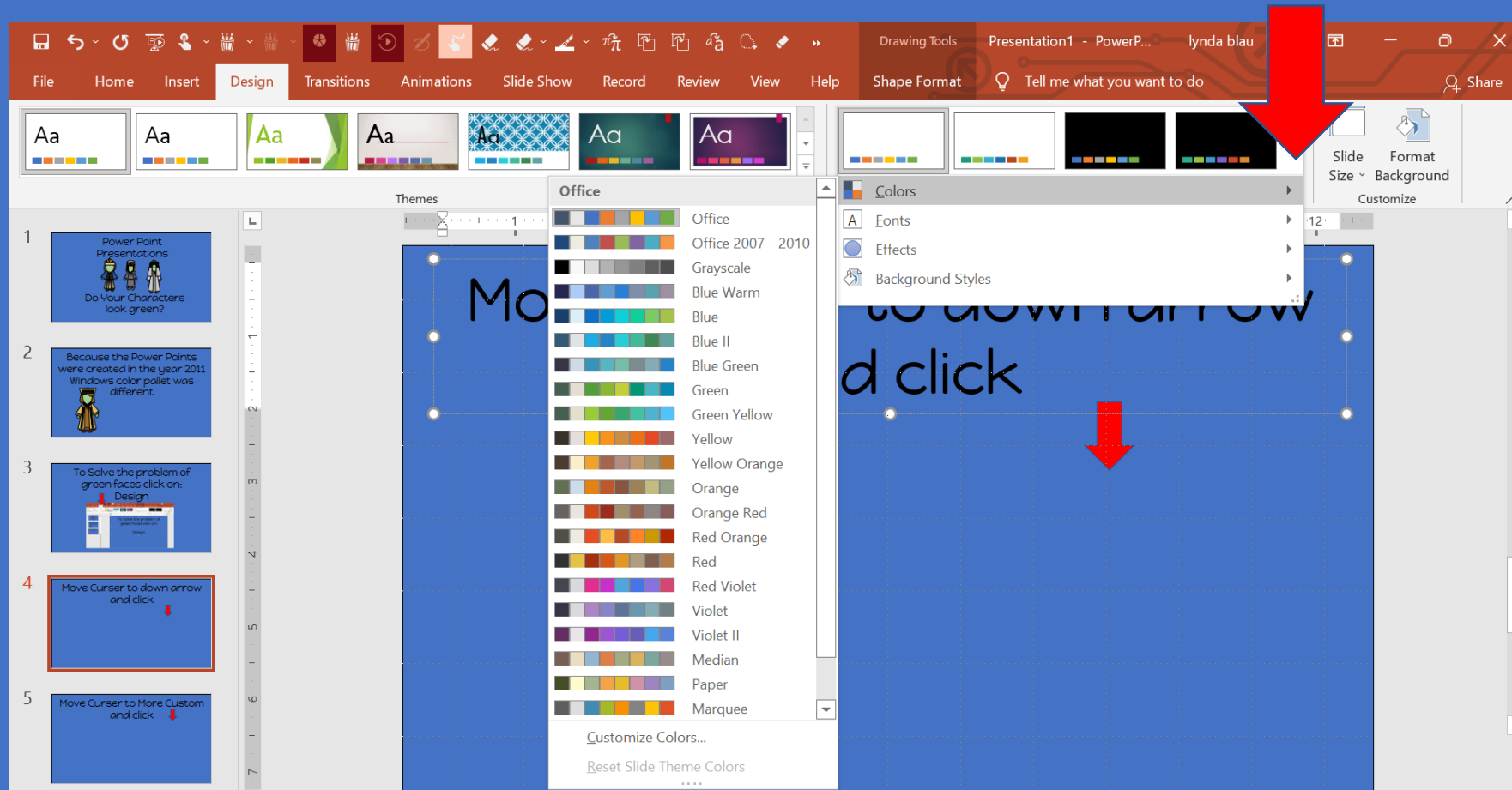
# To Solve the problem of green faces click on: Design



# Move Curser to down arrow and click

The screenshot displays the Microsoft PowerPoint interface. The top ribbon is set to the 'Design' tab. The 'Colors' task pane is open, showing a list of color themes. A red arrow points to the down arrow at the bottom of the color palette. The main slide area shows a blue background with the text 'Move Curser to down arrow and click'. A second red arrow points to this text. The left sidebar shows a list of slides, with slide 4 highlighted. The bottom status bar indicates 'Slide 4 of 5' and 'English (United States)'. The Windows taskbar at the bottom shows the search bar and various application icons.

# A color pallet will appear and click on office 2007-2010



2007-2010 will change some of the other colors you will see in the background or on the characters, but at least they will not be GREEN Practice on this presentation. All the characters, and some backgrounds will change.



If you are looking at the PDF version you will not be able to make changes.  
Power Point...make sure to enable presentation.